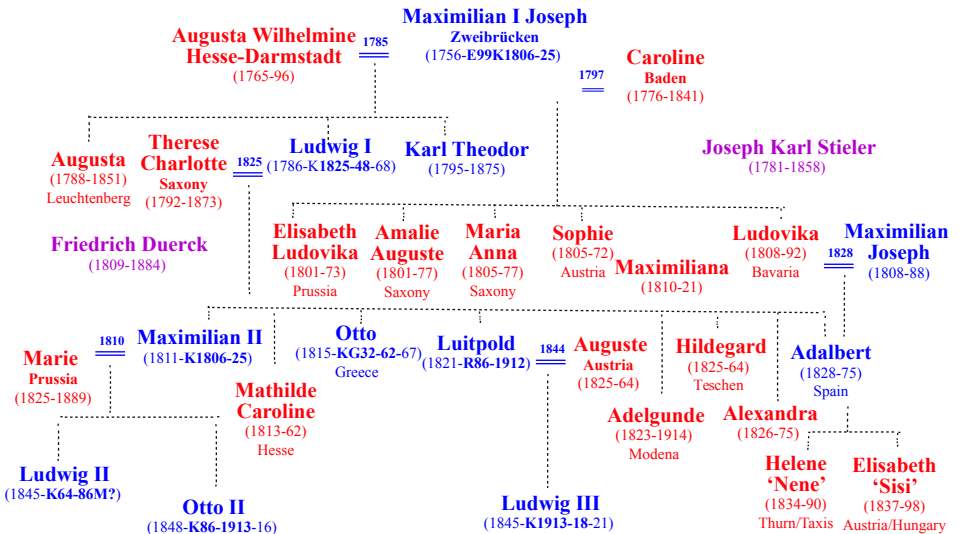


# Bavarian Court

## (1780-1918)



Compiled by Toon Senta



**Augusta Wilhelmina** (Johann Schröder 1790) Stadtmuseum Zweibrücken

**Hesse-Darmstadt** 1785  
(1765-96)

- Ludwig I** (1786-1825-48-68)
- Augusta Amalia** (1788-1851)
- Caroline Augusta** (1792-1872)
- Karl Theodor** (1795-1875)



**Academy of Fine Arts** (1890-1905)



**Max I Joseph in Coronation Gown** (1822) Alte Pinakothek

**Bavarian Prince-Elector** (1799-1806)  
**King of Bavaria** (1806-1825)



**Caroline of Baden** (Friedrich Dürck c1810) CP

1796 **Baden** (1776-1841)

- Elisabeth Ludovika** (1801-1873) Prussia
- Amalie Auguste** (1801-1877) Saxony
- Maria Anna** (1805-1877) Saxony
- Sophie** (1805-1873) HRE
- Ludovika** (1808-1892)
- Maximiliana** (1810-1821) Bavaria
- Bavarian Secularization** (1802-03)
- Academy of Fine Arts** (1808/1886)



**Therese Charlotte**  
(1826)  
Neue Pinakothek

(1786-K1825-48-68)

**Augusta-Amélie**  
(1832)  
Nymphenburg Palace



**König Ludwig I in Coronation Robes** (1832) Nymphenburg Palace



**Karl Theodor** (1832) CP

**Saxony**  
(1792-1873) 1825

- Maximilian II** (1811-48-64)
- Mathilde Caroline** (1813-1862)
- Otto** (1815-32-62 1867)
- Luitpold** (1821-R86-1912)
- Adelgunde** (1823-1914)
- Hildegard** (1825-1864)
- Alexandra Amalie** (1826-1875)
- Adalbert** (1828-1875)



**Nymphenburg Palace** (Bernardo Bellotto c1761) National Gallery of Art

**Alte Pinakothek** (1826)

**Ultramontanism** (1837-47)

**Beer Riots** (1844)

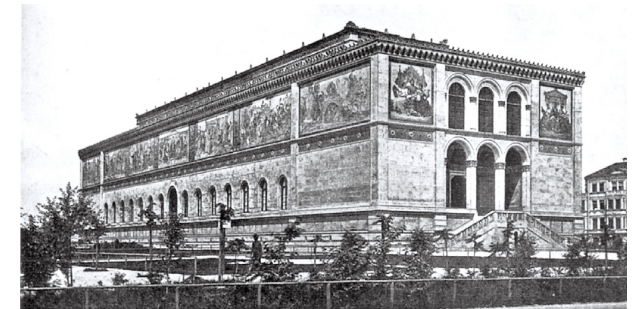
**March Proclamation** (1848)

**Abdication** (1848)

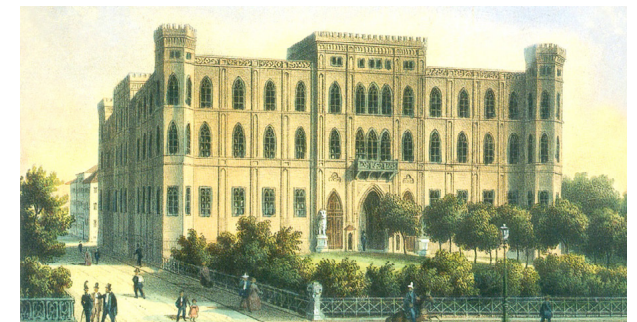
**Neue Pinakothek** (1853)



**Alte Pinakothek** (c1895) Library of Congress



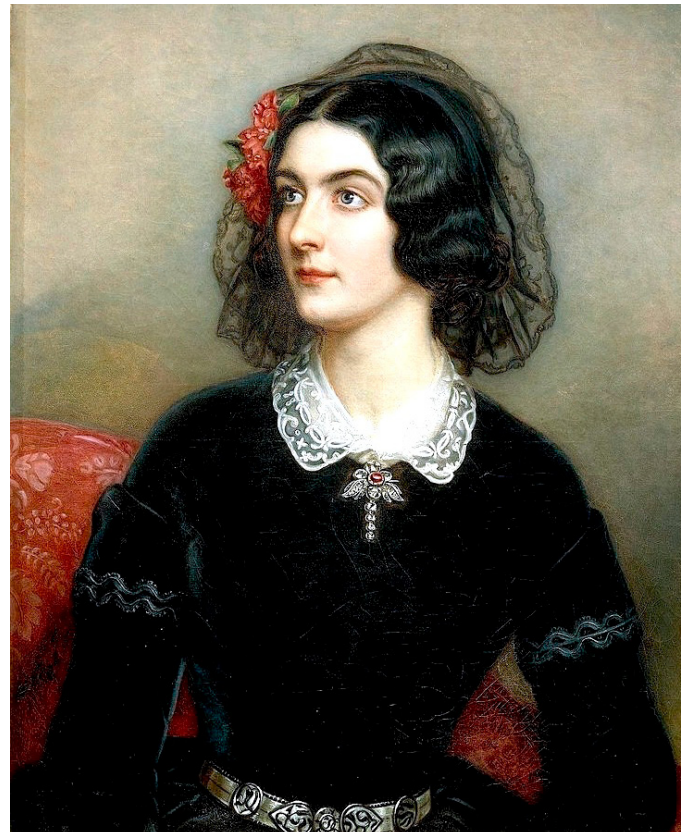
**Neue Pinakothek** (1880)



**Wittelsbacher Palace** (c1880)



**Marchesa Marianna Florenzi** (1831) **Lola Montez** (1847) Nymphenburg Palace





**Elisabeth Ludowika (c1840) Sanssouci**



**Elisabeth Ludovica,  
Amalie, Maximiliana  
(1814) Munich  
Residence**

**Maria  
Anna  
(c1842)  
CP**



**Sophie Friederike (1832)  
Nymphenburg Palace**



**Amalie  
Auguste  
(1823)  
Galerie  
Neue  
Meister**



**Maximilian Joseph and  
Ludovika Wilhelmina  
(1828) CP**

**Ludovika, Sophie, Maria Anna  
(1822) Munich Residence**





Maximilian II (c1860)



Marie Prussia <sup>1810</sup> Maximilian II  
(1825-1889) (1811-K1806-25)



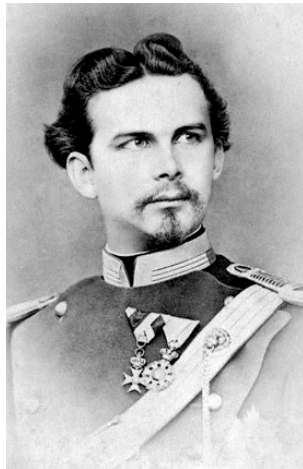
Marie Prussia (1843) Nymphenburg Palace



Hohenschwangau (Sødring 1843) CP

Ludwig II  
(1845-K64-86M?)

Otto II  
(1848-K86-1913-16)



Ludwig II (c1860)



Neuschwanstein (1890-1905) Library of Congress



Otto (c1863)



**Mathilde Caroline** (Noack 1857)  
Städtische Kunstsammlung



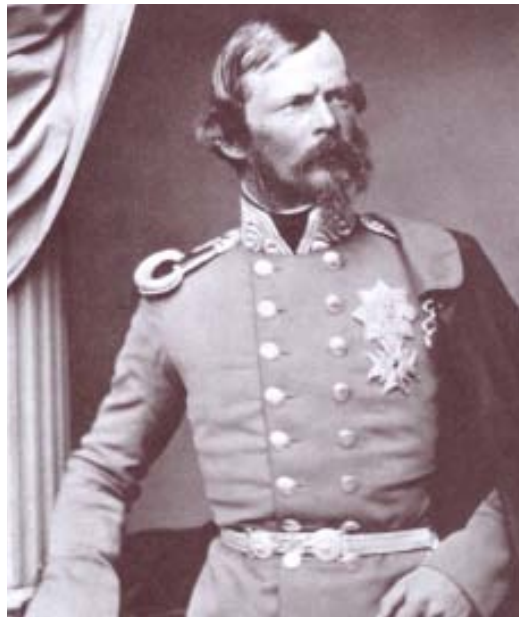
**Othon as Young Man** (1832)  
Benaki Museum



**Adelgunde as Bride** (1842) CP



**Hildegard** (c1830) Nymphenburg



**Auguste Ferdinande** (c1845) CP  
**Luitpold** (c1860)



**Ludwig III** (c1830)

**1844**  
**Ludwig III**  
**(1845-K1913-18-21)**



**Alexandra Amalie** (c1845)  
Nymphenburg Palace



Helene (Ebersberg 1832) CP



Elisabeth 'Sisi' (1832) CP

(1855) CP

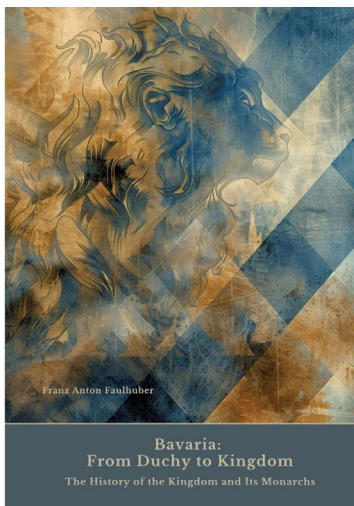
**Helene**  
**'Nene'**  
(1834-90)  
Thurn/Taxis

**Elisabeth**  
**'Sisi'**  
(1808-92)  
Austria/Hungary

**Ludovika** **Maximilian**  
(1808-92) 1828 **Joseph**  
Bavaria (1808-88)

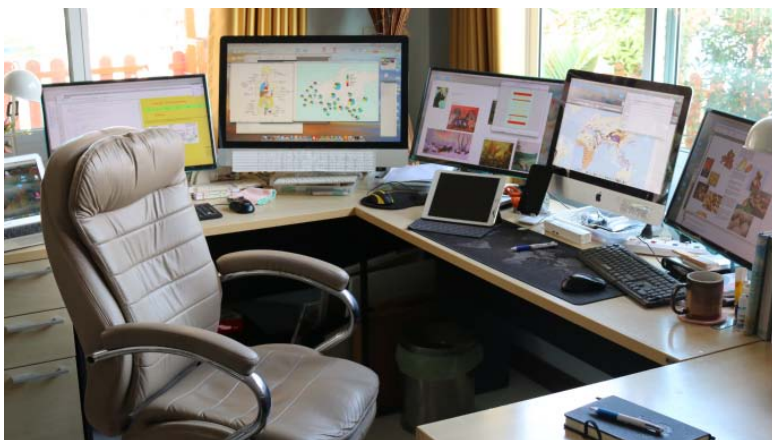


Siblings of Empress 'Sisi' on the Veranda of Castle Possenhofen (1854) CP



Grateful acknowledgement is made to Wikipedia and Wikipedia Commons and all institutions and private individuals providing high quality access to copies of paintings in the public domain in countries where the copyright term is the author's life plus 70 years or fewer.

Franz Anton Faulhuber (2024)



[eaeinternal.com](http://eaeinternal.com)

**EurAsian Education** (Internal)